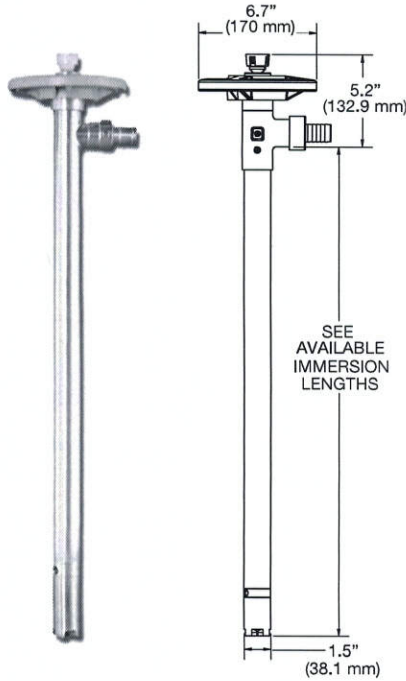


**Common Applications**

- Motor Oil (up to 30 wt)
- Light Machining Oils
- Anti-Freeze
- Hydraulic Fluid
- Lubricating oils
- Non-Corrosive Liquids

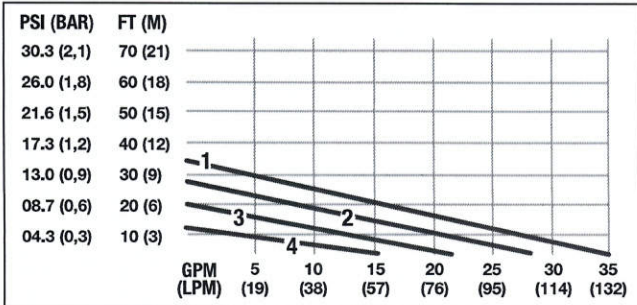
**Technical Specifications**



**Pump Design:** ..... Sealless / Centrifugal  
**Discharge:** ..... 1" (25,4 mm) Hose Barb  
 ..... \*3/4" (19 mm) Hose Barb *available upon request*  
**Wetted Materials:**..... Aluminum, SS316, PTFE, Carbon Graphite  
**Motor Drive Options:**..... 110V & 220V Single Phase, Pneumatic, Explosion Proof  
**Maximum Viscosity:** (based on motor option) ..... SP-280P & SP-ENC : 1500 cps (mPas)  
 ..... SP-A2 & SP-420EX : 750 cps (mPas)  
 ..... SP-A1 : 450 cps (mPas)  
 ..... SP-410EX : 200 cps (mPas)  
**Maximum Discharge Pressure:** ..... SP-6600 : 16 psi (1,1 bar)  
 ..... SP-6700 : 32 psi (2,2 bar)  
**Maximum Flow Rate** (based on water) ..... SP-6600 : 35 gpm (132 lpm)  
 ..... SP-6700 : 16 gpm (60 lpm)  
**Maximum Specific Gravity:**..... 1.8\*  
**Maximum Temperature:** ..... 175° F (80° C)  
**Available Immersion Lengths:** ..... 27" (700 mm), 39" (1000 mm), 47" (1200 mm),  
 ..... 60" (1500 mm), 72" 1800 mm  
 \*Additional lengths available upon request



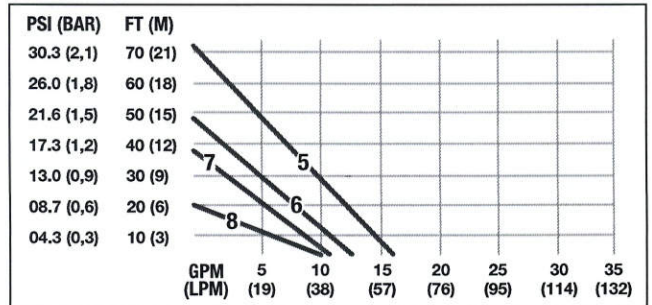
**SP-6600**



**Flow Rate (Based On Water)**

- 1 SP-280P, SP-ENC
- 2 SP-420EX, SP-A2
- 3 SP-A1
- 4 SP-410EX

**SP-6700**



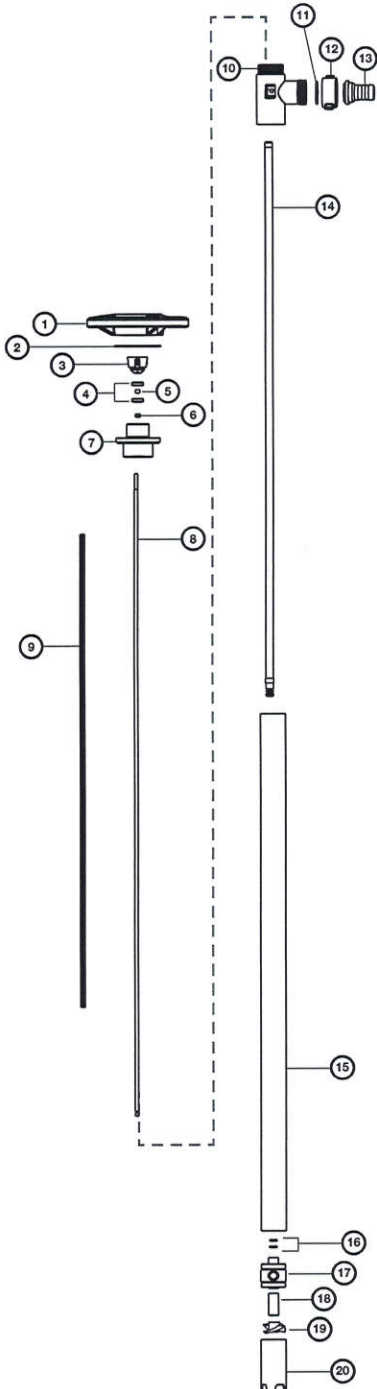
**Flow Rate (Based On Water)**

- 5 SP-280P, SP-ENC
- 6 SP-420EX, SP-A2
- 7 SP-A1
- 8 SP-410EX



**Warning:** When pumping flammable or combustible liquids, pump tube must be used in conjunction with an explosion proof motor.

- Note: Maximum Specific Gravity is 1.8 when used in conjunction with 825 watt motor.
- Note: When pumping viscosities over 1,000 cps, pump must be used intermittently to avoid potential premature failure and/or damage.



## SP-6600 & 6700 Spare Parts List



Ref. Number	Description	P/N	Qty
1	Handwheel, Polypropylene	1842	1
2	Snap Ring, Steel	1508	1
3	Pump Coupling, Nylon	*1004	1
4	Bearing, Viton Shielded	*1038-2	2
5	Bearing Spacer, SS316L	*8838-4	1
6	V Seal, PTFE	4000	1
7	Connection Flange, AL 6061	6650	1
8	Drive Shaft, SS316L		1
	27" (700mm)	6661	
	39" (1000mm)	6662	
	47" (1200mm)	6663	
	60" (1500mm)	6664	
	72" (1800mm)	6665	
9	Guide Sleeve, PTFE		1
	27", 39", 47" (700mm, 1000mm, 1200mm)	7659	
	60", 72" (1500mm), 1800mm)	7660	
10	Discharge Housing, AL 6061	6651	1
11	Seal, PTFE	*2195	1
12	Knurled Nut, AL 6061	6656	1
13	Hose Barb, AL 6061		1
	Hose Barb, 1", (19mm)	6657	
	Hose Barb, 3/4" (25mm)	6658	
14	Inner Tube, AL 6061		1
	27" (700mm)	6670	
	39" (1000mm)	6671	
	47" (1200mm)	6672	
	60" (1500mm)	6673	
	72" (1800mm)	6674	
15	Outer Tube, AL 6061		1
	27" (700mm)	6680	
	39" (1000mm)	6681	
	47" (1200mm)	6682	
	60" (1500mm)	6683	
	72" (1800mm)	6684	
16	O-Ring, Viton	7655	2
17	Pump Housing, AL 6061	6685	1
18	Bushing, Carbon Graphite	*7606	1
19	Rotor/Impeller, PTFE		1
	High Volume Rotor (6600 Series)	*7706	
	High Pressure Impeller (6700 Series)	4608HH	
20	Pump Foot, AL 6061		1
	High Volume (6600 Series)	6686	
	High Pressure (6700 Series)	6786	
n/a	Repair Kit (*Includes Items 3, 4, 5, 11, 18, 19)	7054	1



When pumping flammable/combustible liquids, this pump must be used in conjunction with an explosion proof motor.

©Viton is a registered trademark of DuPont Dow Elastomers.